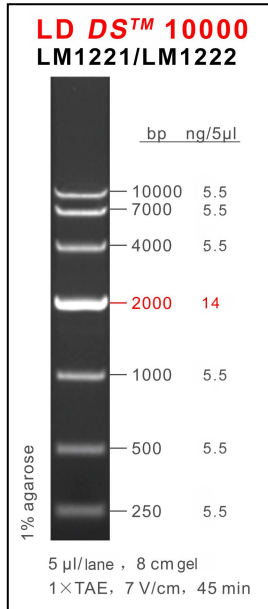


LD DS™10000



Product Name

LD DS™10000

Cat. No./Spec.

LM1221/60 preps, LM1222/60 preps×5

Description

LD DS™10000 is an ideal DNA for determining the size of double-stranded DNA (dsDNA) from 250 to 10,000 base pairs (bp). The ladder consists of 7 linear dsDNA fragments. The **2,000bp** fragment is present at increased intensity to allow easy identification. All fragments are precisely quantified and mixed during the production. This ladder is pre-mixed with loading dye and is ready to use.

This product is an LD series DNA Marker, suitable for use with

non-toxic nucleic acid dyes during the pre-staining of agarose gels.

Recommended Amount

5 µl/lane

Recommended Electrophoresis Condition

5 µl/lane, 8 cm 1% Agarose Gel, 1×TAE, 7 V/cm, 45min.

Bands (bp)

250、500、1,000、**2,000**、4,000、7,000、10,000.

Concentration

Total concentration, 9.4 ng/µl

Typical bands, 14 ng/5µl

Other bands, 5.5 ng/5µl

Storage Condition

Store unopened at room temperature or 4°C for 2 years.