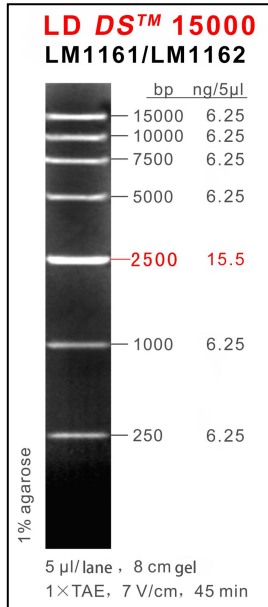


LD DS™15000



Product Name

LD DS™15000

Cat. No./Spec.

LM1161/50 preps, LM1162/50 preps×5

Description

LD DS™15000 is an ideal DNA Marker for determining the size of double-stranded DNA (dsDNA) from 250 to 15,000 base pairs (bp). The ladder consists of 7 linear dsDNA fragments. The **2,500bp** fragment is present at increased intensity to allow easy identification. All fragments are precisely quantified and mixed during the production. This ladder is pre-mixed with loading dye and is ready to use.

This product is an LD series DNA Marker, suitable for use with

non-toxic nucleic acid dyes during the pre-staining of agarose gels.

Recommended Amount

5 µl/lane

Recommended Electrophoresis Condition

5 µl/lane, 8cm 1% Agarose Gel, 1×TAE, 7V/cm, 45min.

Bands (bp)

250、1,000、**2,500**、5,000、7,500、10,000、15,000.

Concentration

Total concentration, 10.5 ng/µl

Typical bands, 15.5 ng/5µl

Other bands, 6.25 ng/5µl

Storage Condition

Store unopened at room temperature or 4°C for 2 years.