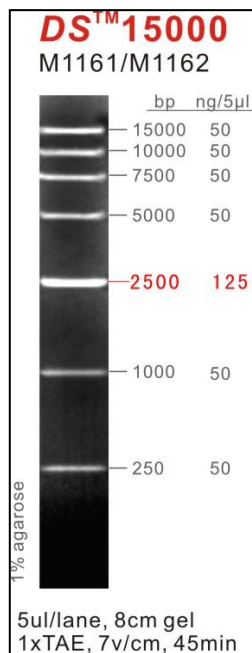


## DS™15000



### Product Name

DS™15000

### Cat. No./Spec.

M1161/50 µg, M1162/50 µg×5

### Description

DS™15000 is an ideal DNA Marker for determining the size of double-stranded DNA (dsDNA) from 250 to 15,000 base pairs (bp). The ladder consists of 7 linear dsDNA fragments. The **2,500bp** fragment is present at increased intensity to allow easy identification. All fragments are precisely quantified and mixed during the production. This ladder is pre-mixed with loading dye and is ready to use.

### Recommended Amount

2-5 µl/lane

### Recommended Electrophoresis Condition

5 µl/lane, 8cm 1% Agarose Gel, 1×TAE, 7V/cm, 45min.

### Bands (bp)

250、1,000、**2,500**、5,000、7,500、10,000、15,000.

### Concentration

Total concentration, 85 ng/µl

Typical bands, 125 ng/5µl

Other bands, 50 ng/5µl

### Storage Condition

Store unopened at room temperature or 4°C for 2 years.