

6× Gel Loading Dye

Cat. No.: M9041 Size: 1 ml × 5

For Research Use Only

Description

Gel Loading Dye (6×) is a pre-mixed loading buffer with two tracking dyes for agarose and non-denaturing polyacrylamide gel electrophoresis. EDTA is included to chelate magnesium (up to 10mM) in enzymatic reactions, thereby stopping the reaction. Bromophenol blue and xylene cyanol are the standard tracking dyes for electrophoresis.

Contents

10mM Tris-HCl (pH 7.6), 0.03% Bromophenol Blue, 0.03% Xylene Cyanol, 60% Glycerol, 60mM EDTA.

Application

Preparation of DNA ladders, markers and samples for loading on agarose or polyacrylamide gels.

Features

Two-color tracking of DNA migration during electrophoresis.

No DNA masking during gel exposure to UV light.

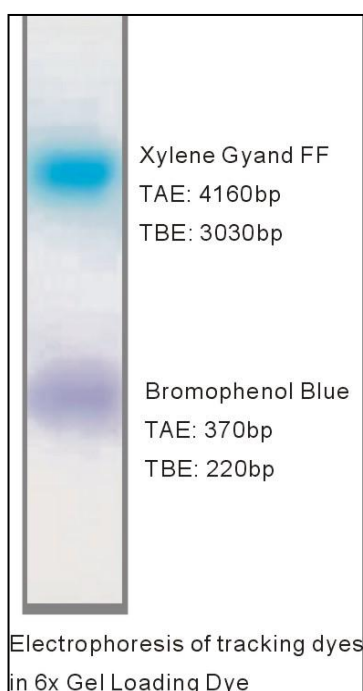
EDTA binds divalent metal ions and inhibits metal dependent nucleases.

Storage

Store at RT or at 4°C for up to 12 months. For longer periods, store at -20°C.

Quality Assurance Statement

Gel Loading Dye (6×) is assayed for absence of endonuclease, exonuclease and no RNase activity.



Usage Recommendations

- 1 Add 1 volume of 6× Gel Loading Dye to 5 volumes of DNA sample.
- 2 Mix well, spin down and load.