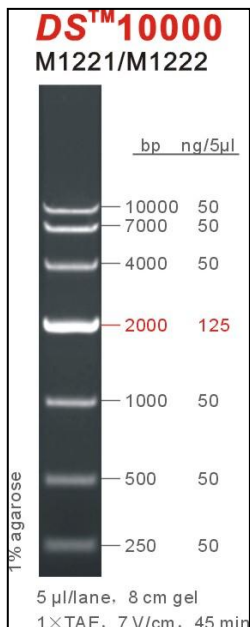


DS™10000



Product Name

DS™10000

Cat. No./Spec.

M1221/50 μg, M1222/50 μg×5

Description

DS™10000 is an ideal DNA Marker for determining the size of double-stranded DNA (dsDNA) from 250 to 10,000 base pairs (bp). The ladder consists of 7 linear dsDNA fragments. The **2,000bp** fragment is present at increased intensity to allow easy identification. All fragments are precisely quantified and mixed during the production. This ladder is pre-mixed with loading dye and is ready to use.

Recommended Amount

2-5 μl/lane

Recommended Electrophoresis Condition

5 μl/lane, 8 cm 1% Agarose Gel, 1×TAE, 7 V/cm, 45min.

Bands (bp)

250、500、1,000、**2,000**、4,000、7,000、10,000.

Concentration

Total concentration, 85 ng/μl

Typical bands, 125 ng/5μl

Other bands, 50 ng/5μl

Storage Condition

Store unopened at room temperature or 4°C for 2 years.