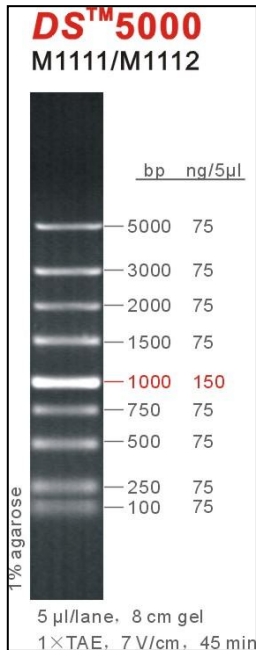


# DS™5000



## Recommended Amount

2-5 μl/lane

## Recommended Electrophoresis Condition

5 μl/lane, 8cm 1% Agarose Gel, 1×TAE, 7V/cm, 45min.

## Bands (bp)

100、250、500、750、**1,000**、1,500、2,000、3,000、5,000.

## Concentration

Total concentration, 150 ng/μl

Typical bands, 150 ng/5μl

Other bands, 75 ng/5μl

## Storage Condition

Store unopened at room temperature or 4°C for 2 years.

## Product Name

DS™5000

## Cat. No./Spec.

M1111/50 μg, M1112/50 μg×5

## Description

DS™5000 is an ideal DNA Marker for determining the size of double-stranded DNA (dsDNA) from 100 to 5000 base pairs (bp). The ladder consists of 9 linear dsDNA fragments. The **1,000bp** fragment is present at increased intensity to allow easy identification. All fragments are precisely quantified and mixed during the production. This ladder is pre-mixed with loading dye and is ready to use.