



DSRed+LD^{*}

Match the Dye with Marker to Obtain Perfect Electrophoresis Results

^{*} DSRed refers to GDSBio DSRed Nucleic Acid Stain; LD refers to GDSBio LD DNA marker

“DSRed+LD” significantly reduces the impact of large molecular dyes in pre-stained gels on DNA fragment migration, achieving effective separation of DNA fragments in electrophoresis results.

DSRed is safe and non-toxic, with ultra-high sensitivity, allowing detection of as low as 1-2 ng DNA.

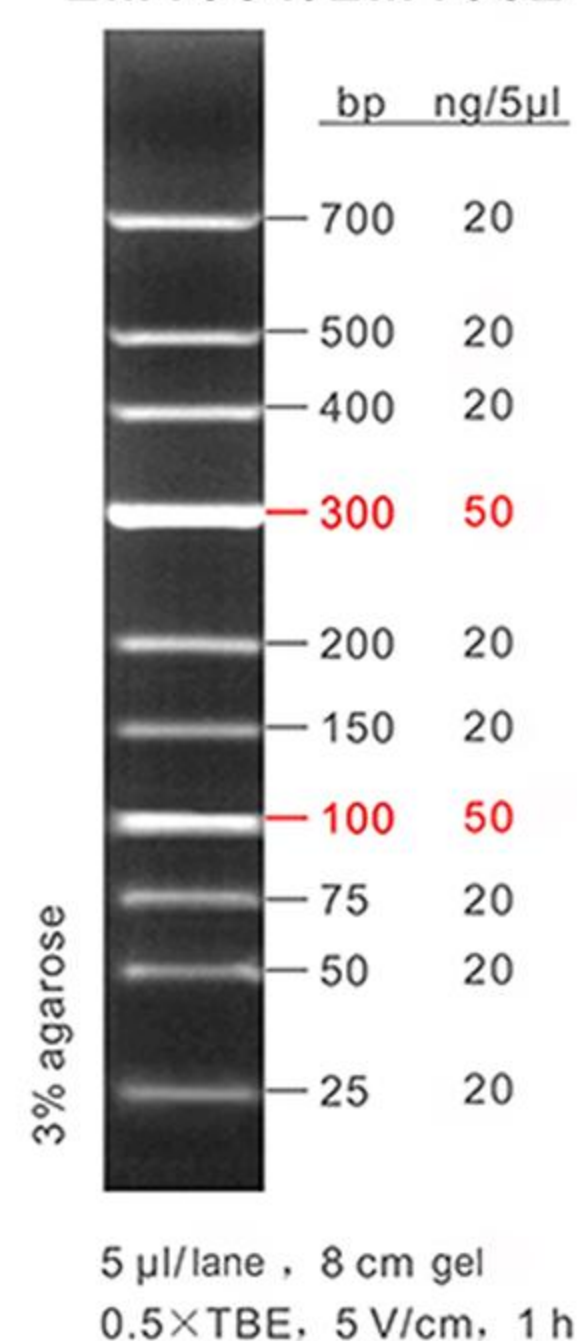
LD series DNA Marker has 18 types, indicating a wide range of electrophoresis needs, with clear and bright bands that are accurately sized and stable in product quality.

Suggestions on Staining Method

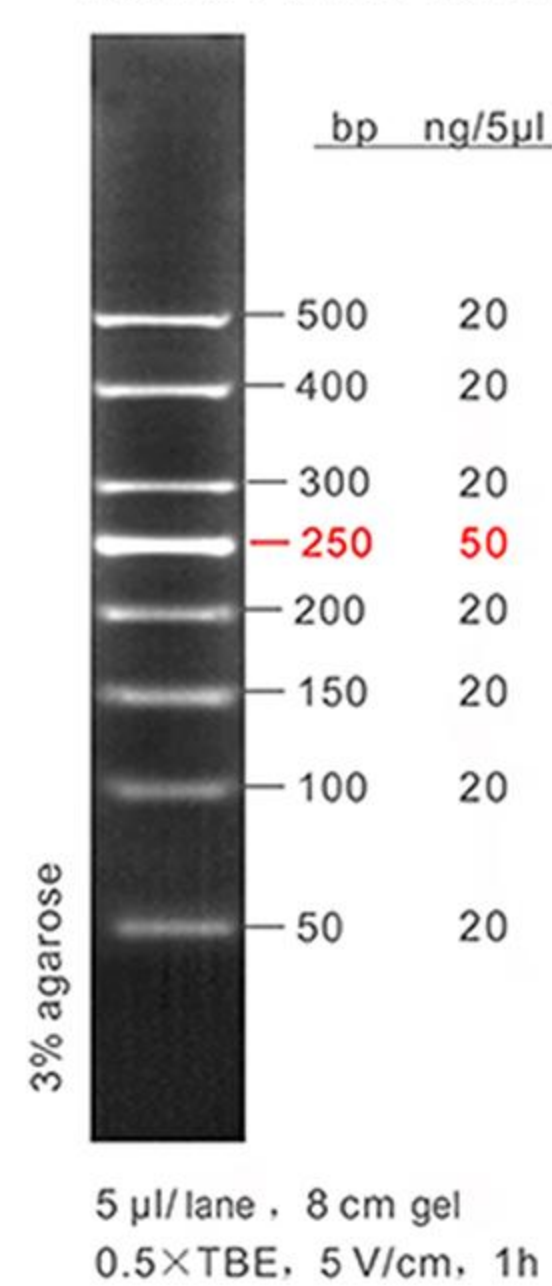
Type of DNA Marker	Suggested staining method of DNA gel	
	Traditional staining dye (such as EB)	Novel staining dye (such as GelRed)
Classic DNA Marker	Precast or post-electrophoresis gel staining	Post-electrophoresis gel staining
LD DNA Marker	Not suggested	Precast

Electrophoresis Image of LD DNA Marker

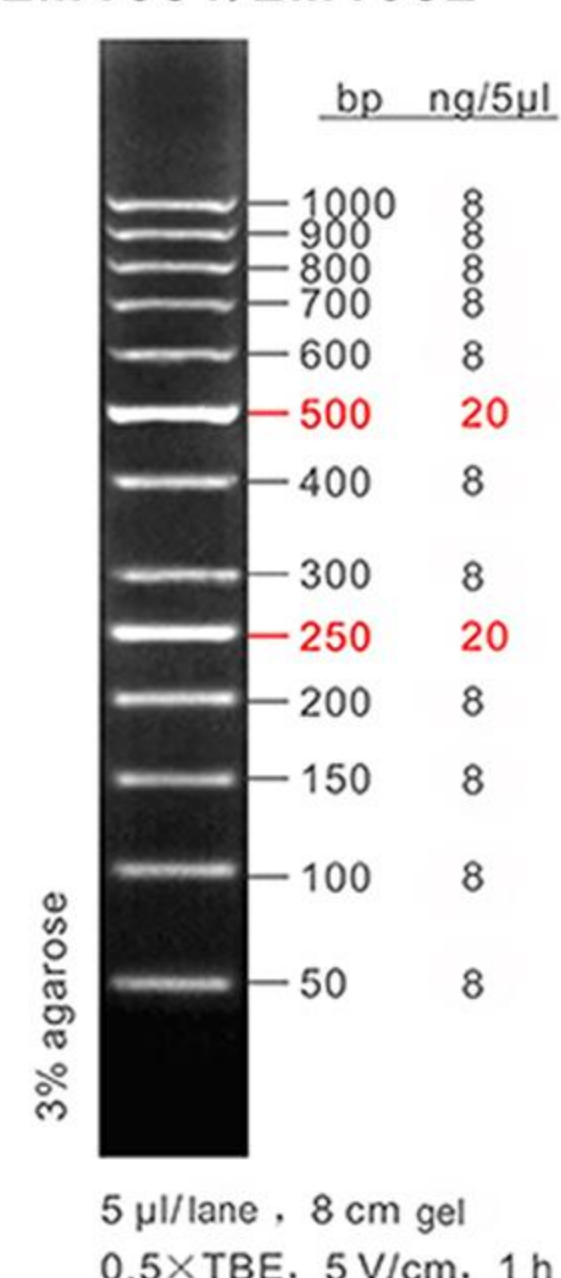
LD Low ladder
LM1031/LM1032



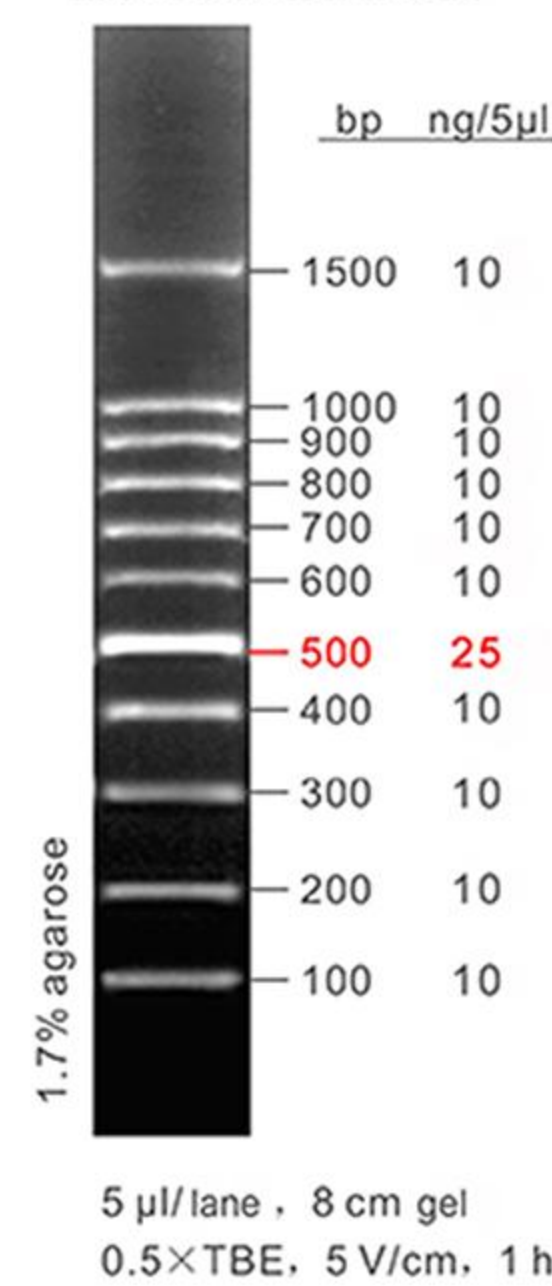
LD 50bp ladder
LM1041/LM1042



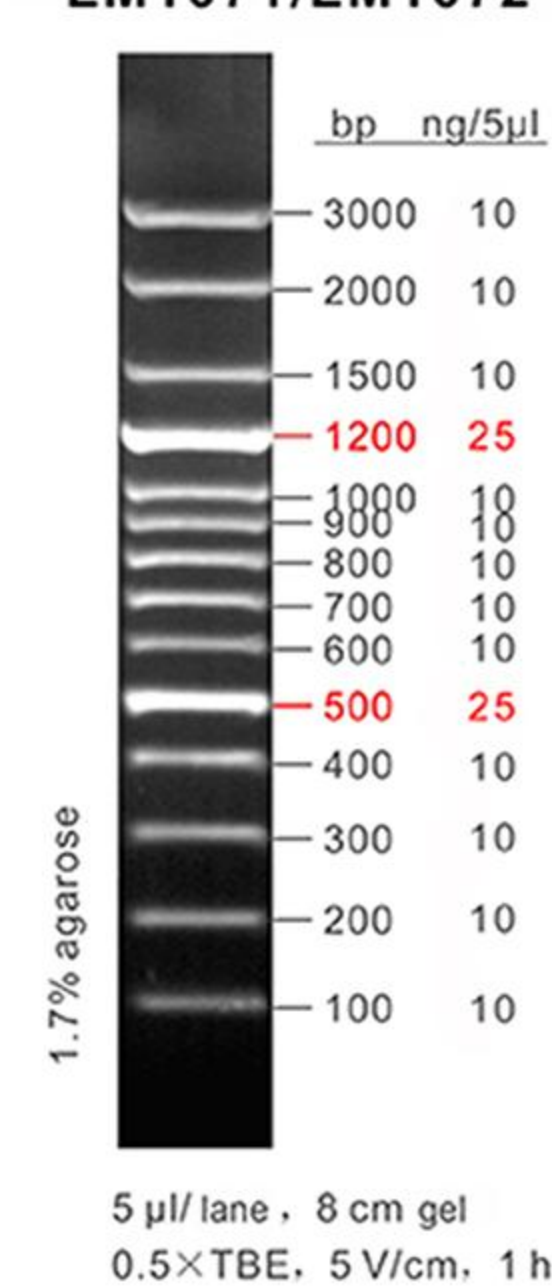
LD 50bp ladder plus
LM1051/LM1052



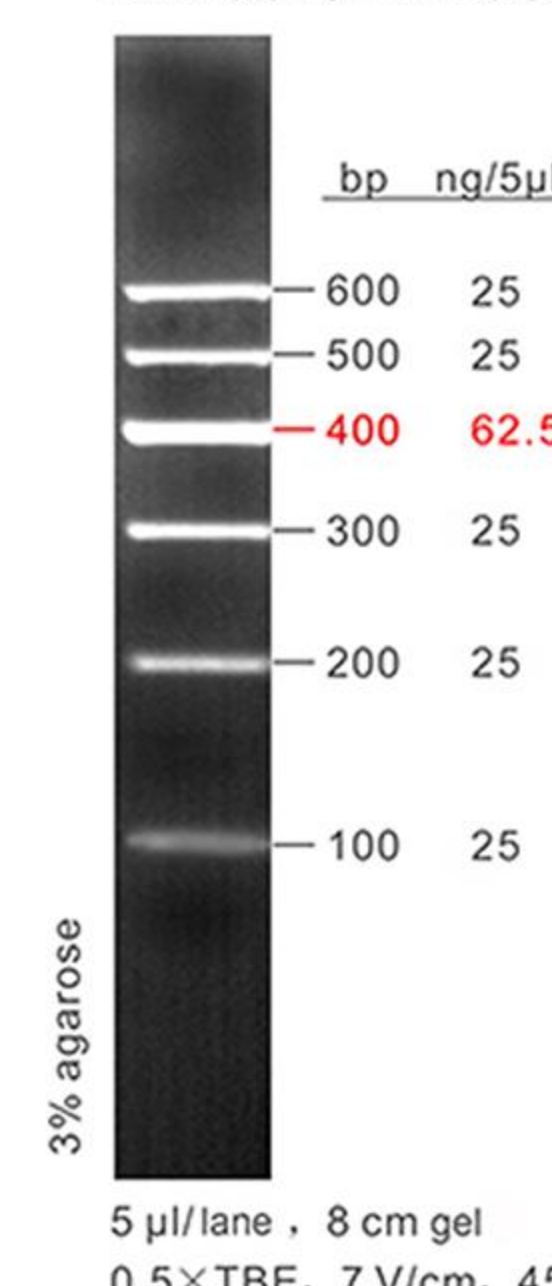
LD 100bp ladder
LM1061/LM1062



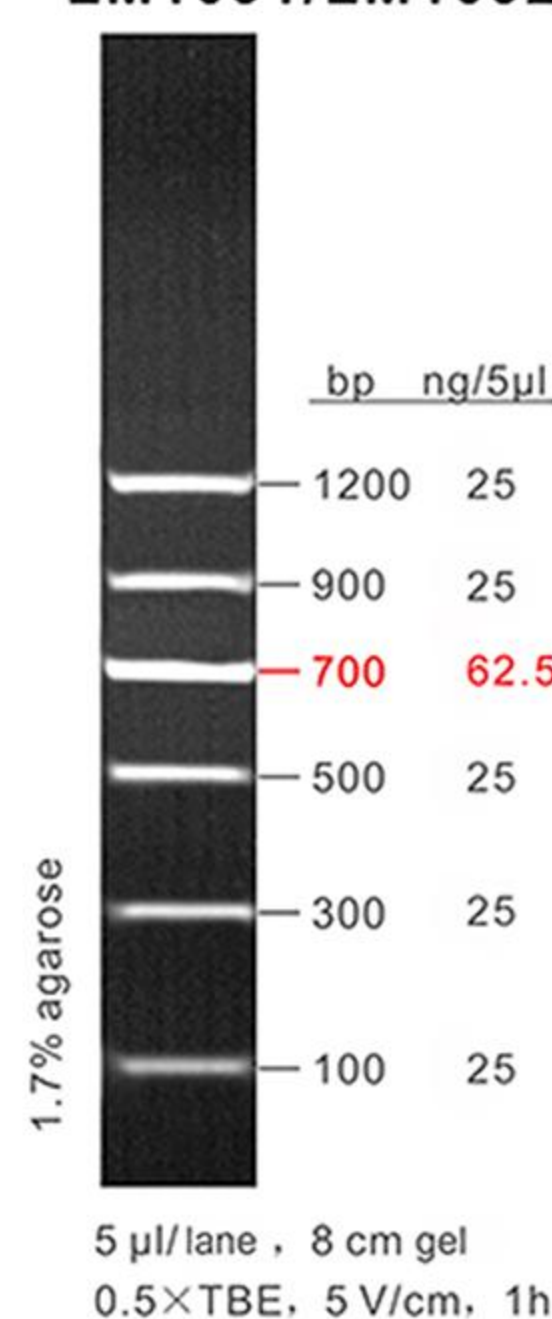
LD 100bp ladder plus
LM1071/LM1072



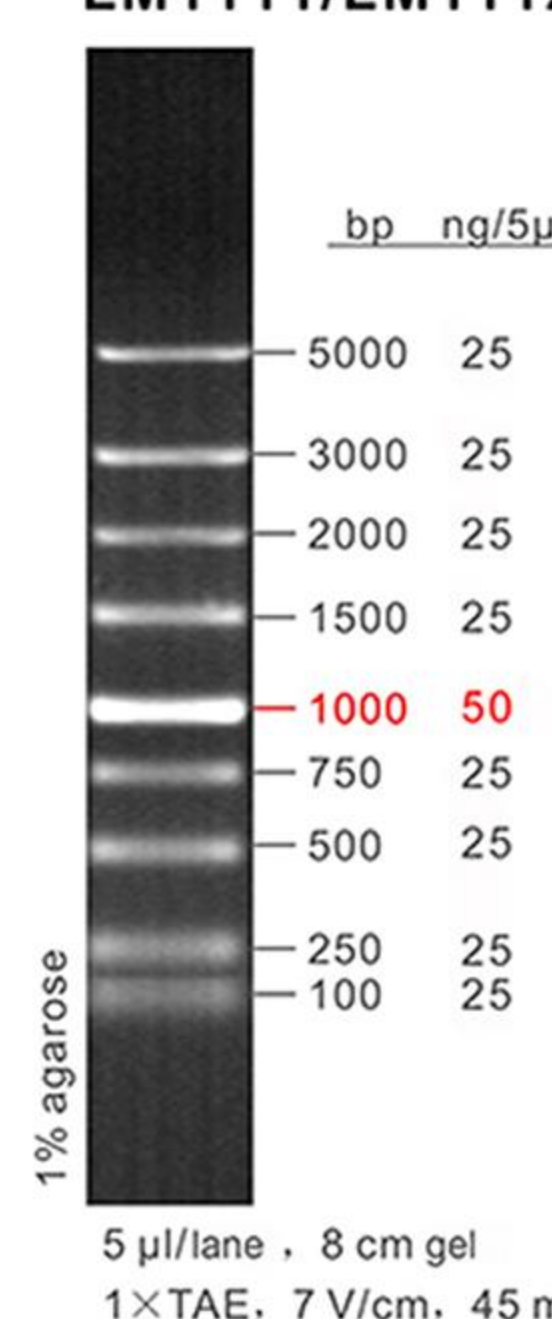
LD Marker 1
LM1081/LM1082



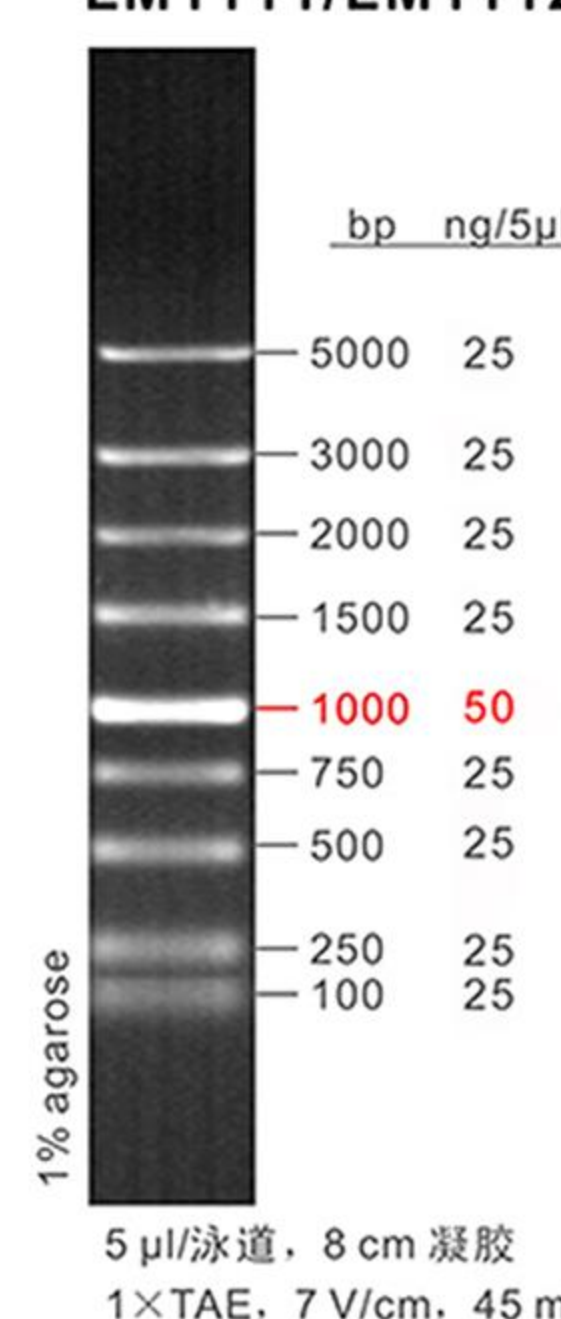
LD Marker 2
LM1091/LM1092



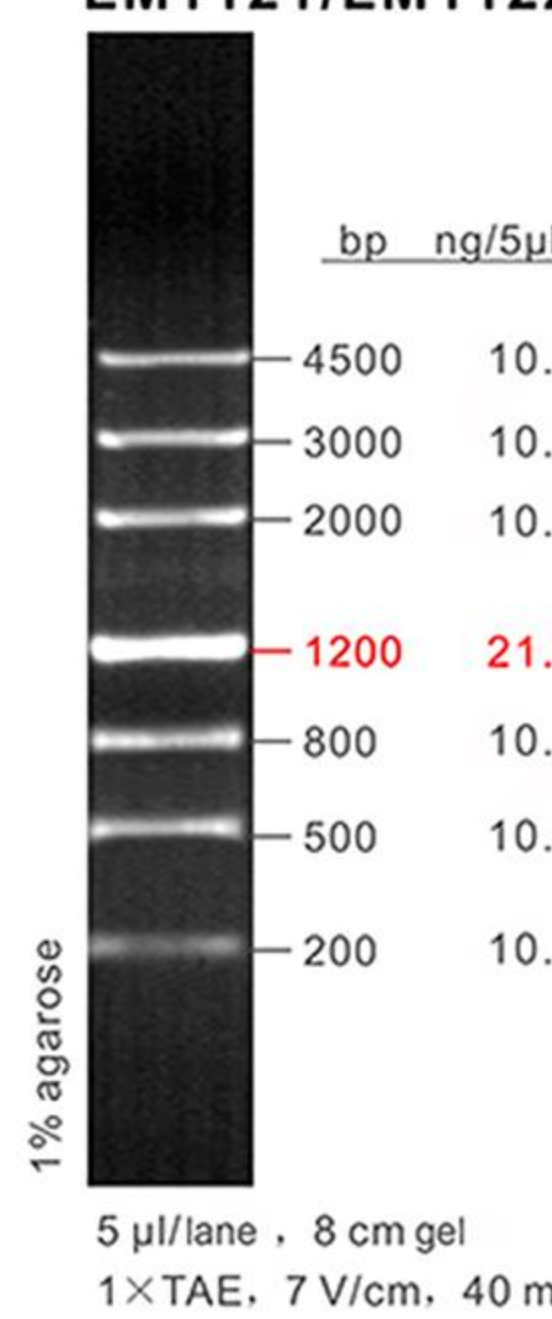
LD DS™ 5000
LM1111/LM1112



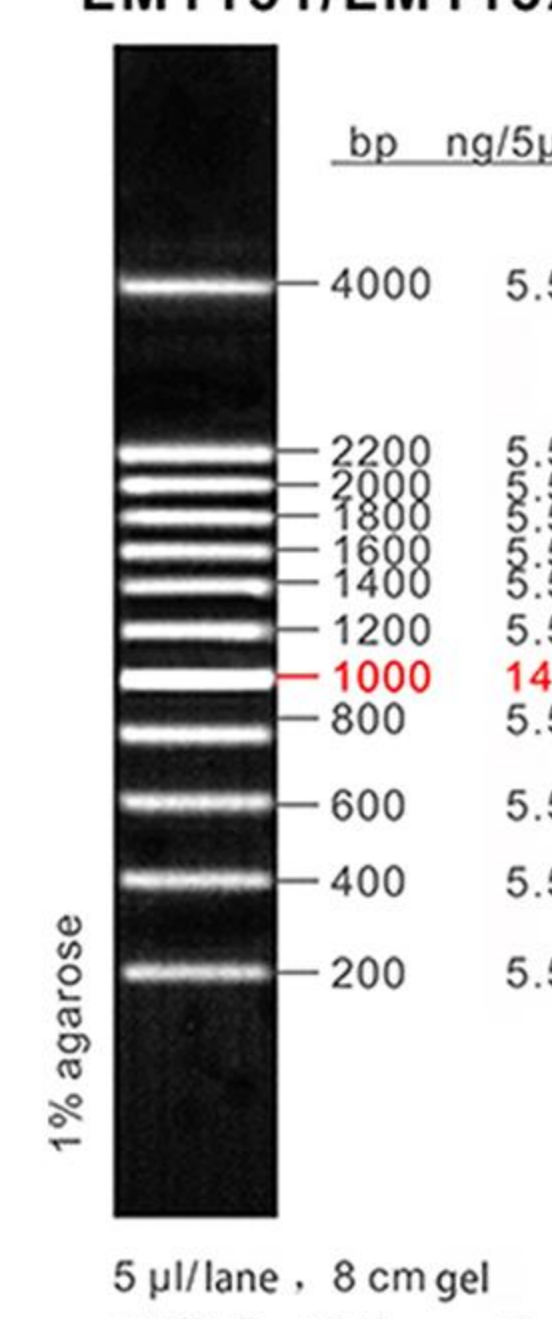
LD DS™ 5000
LM1111/LM1112



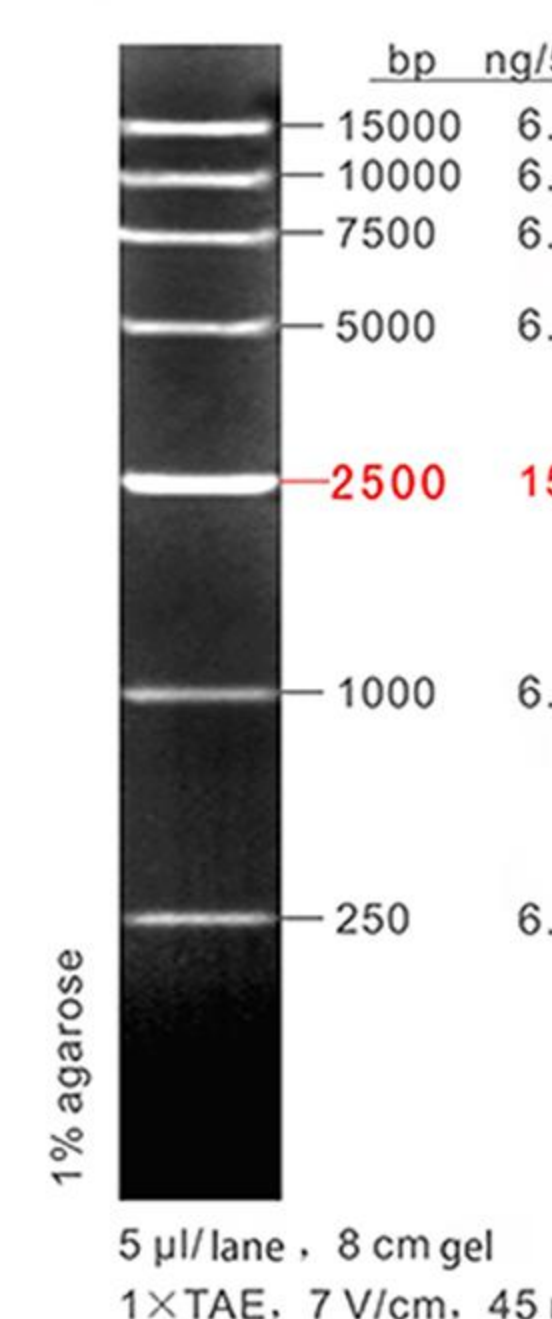
LD Marker 3
LM1121/LM1122



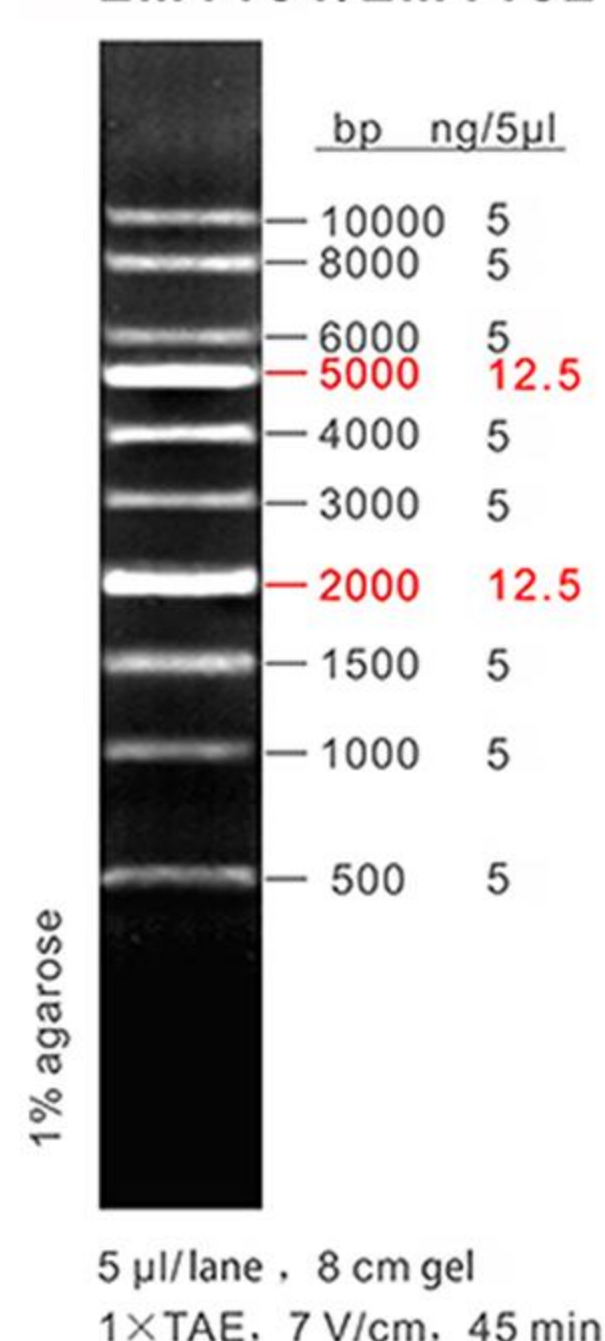
LD 200bp ladder
LM1151/LM1152



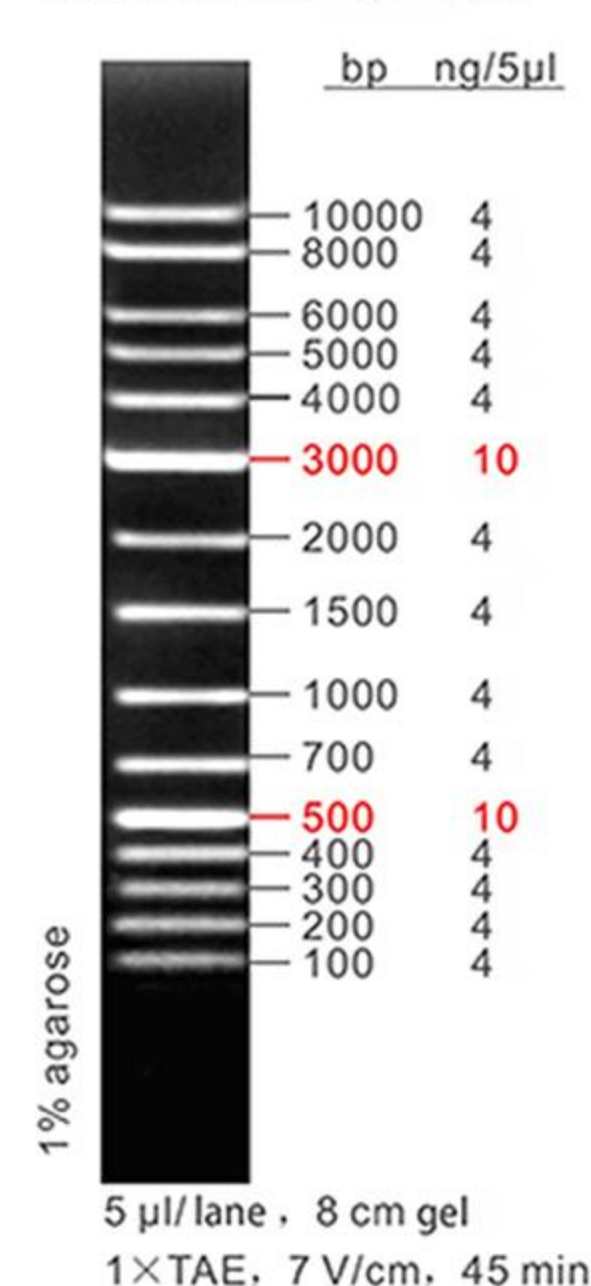
LD DS™ 15000
LM1161/LM1162



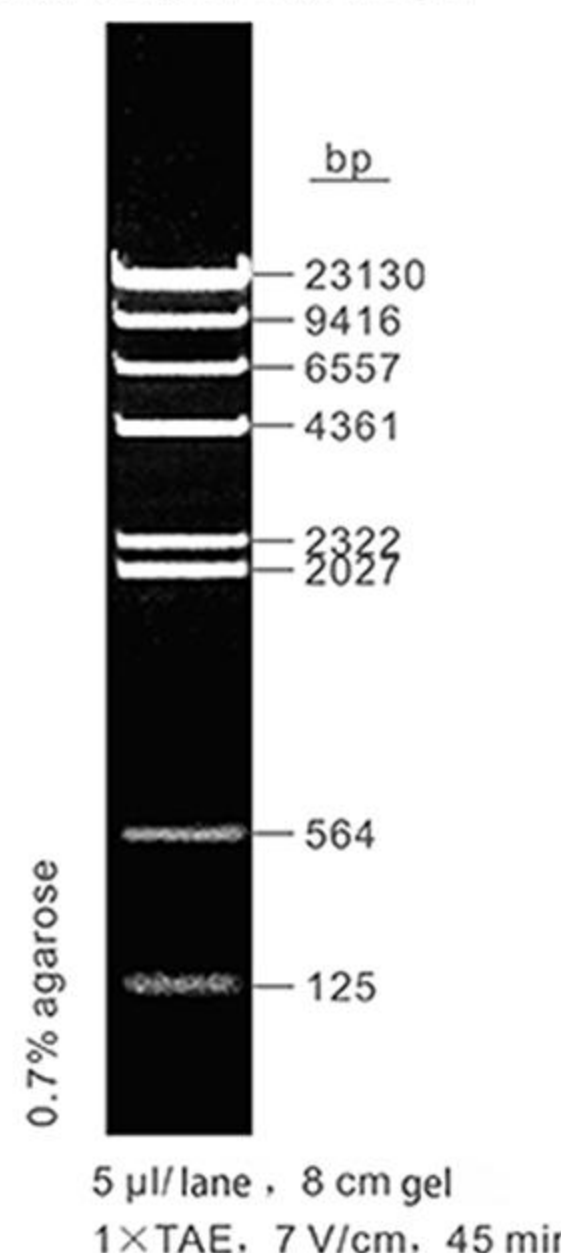
LD 1kb ladder
LM1181/LM1182



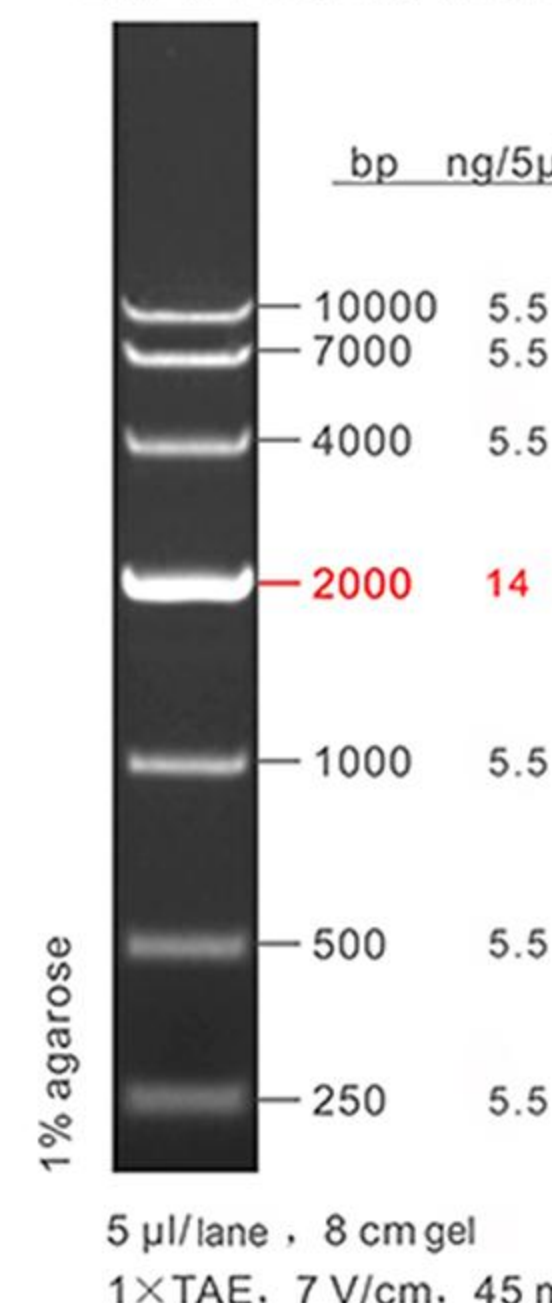
LD 1kb ladder plus
LM1191/LM1192



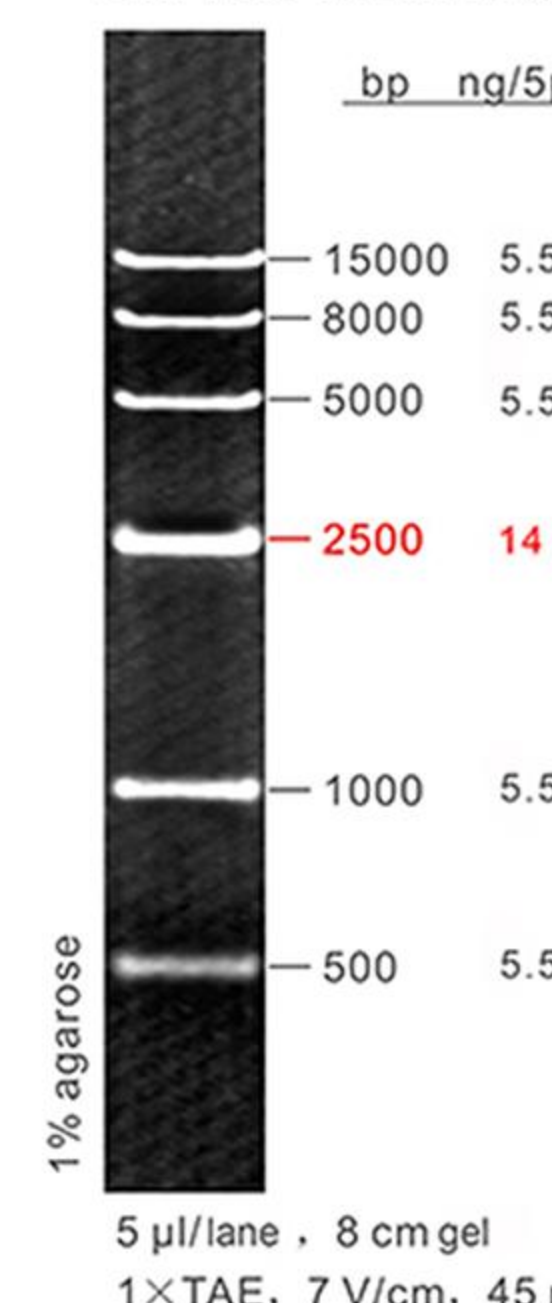
LD Lambda DNA/Hind III
LM1201/LM1202



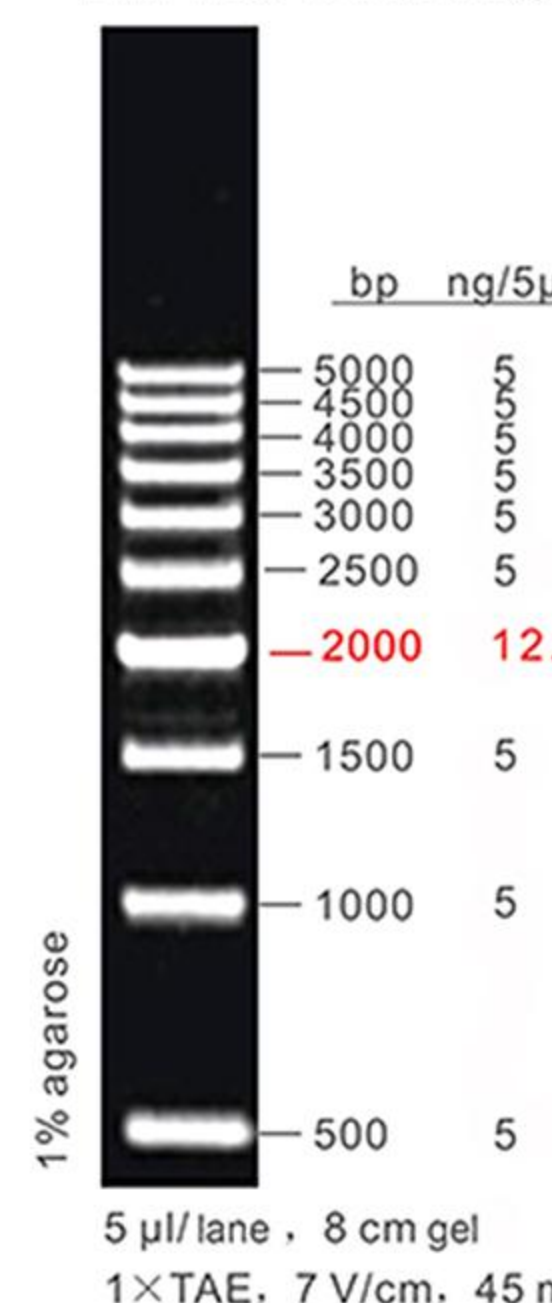
LD DS™ 10000
LM1221/LM1222



LD Marker 4
LM1231/LM1232



LD 500bp ladder
LM1251/LM1252



Ordering Information

Product Name	Cat. No.	Spec.
See the above figure for specific name	See the above figure for specific Cat. No.	small package: 60preps or 50preps large package: 300preps or 250preps or 180preps For specific specifications, please contact GDSBio.
DSRed Nucleic Acid Stain	M7021 M7022	0.5 mL 0.5 mL × 5